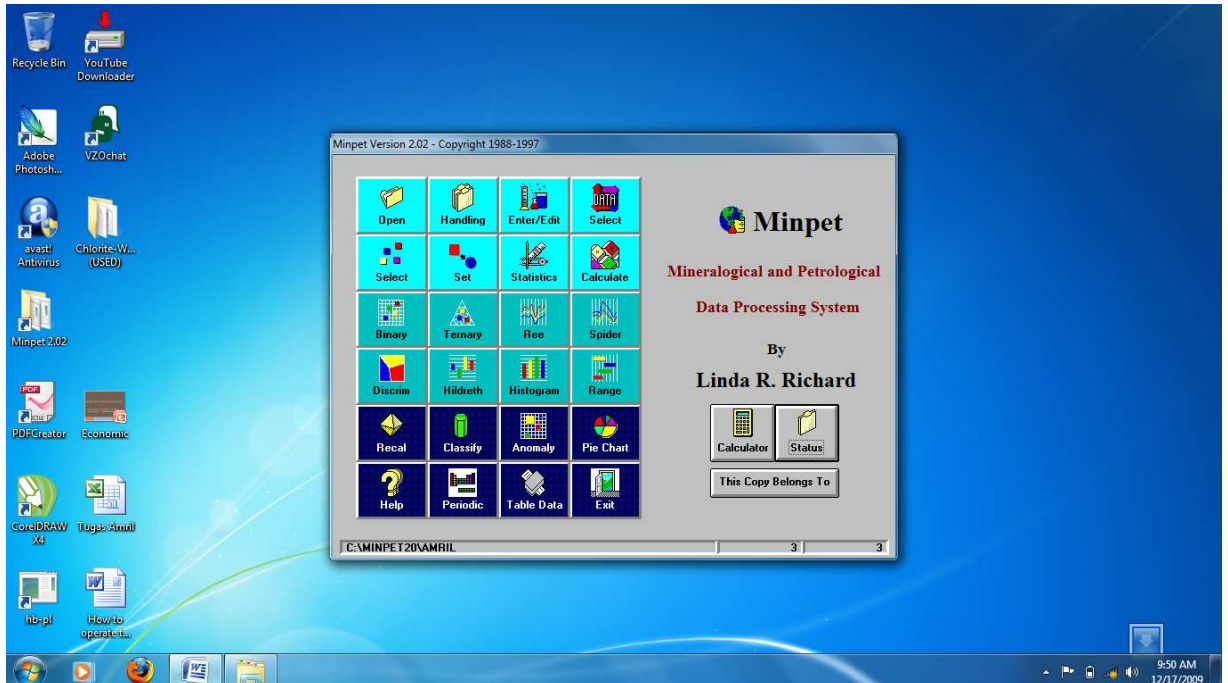
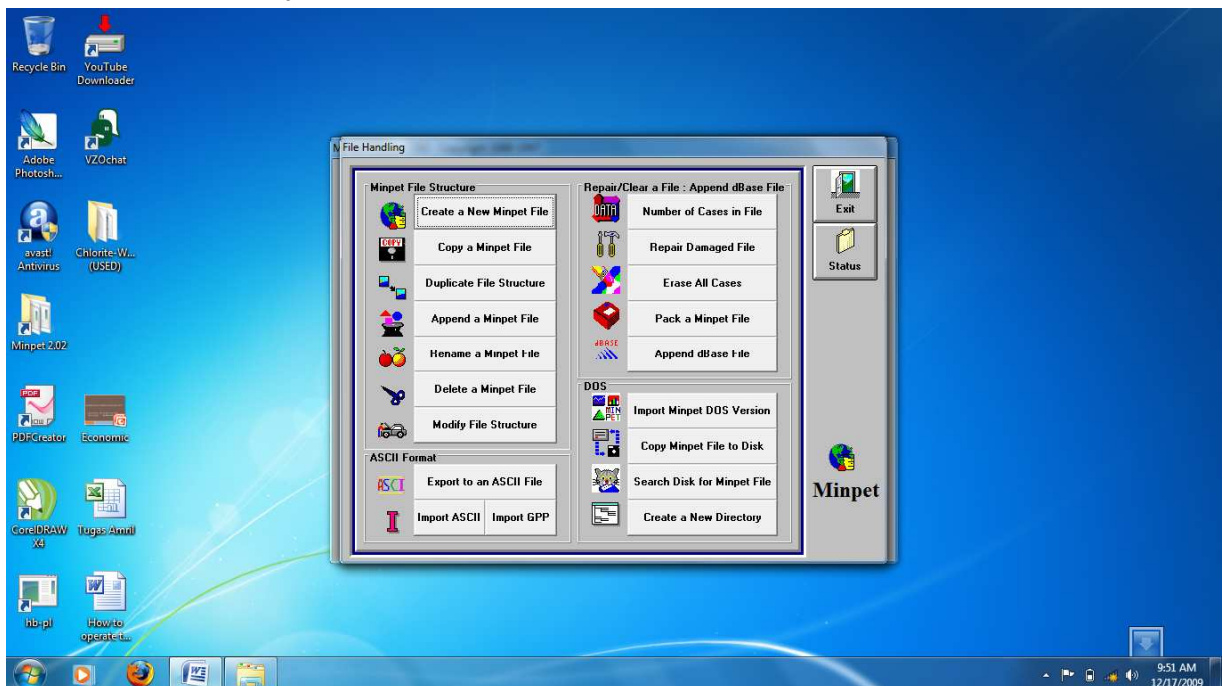


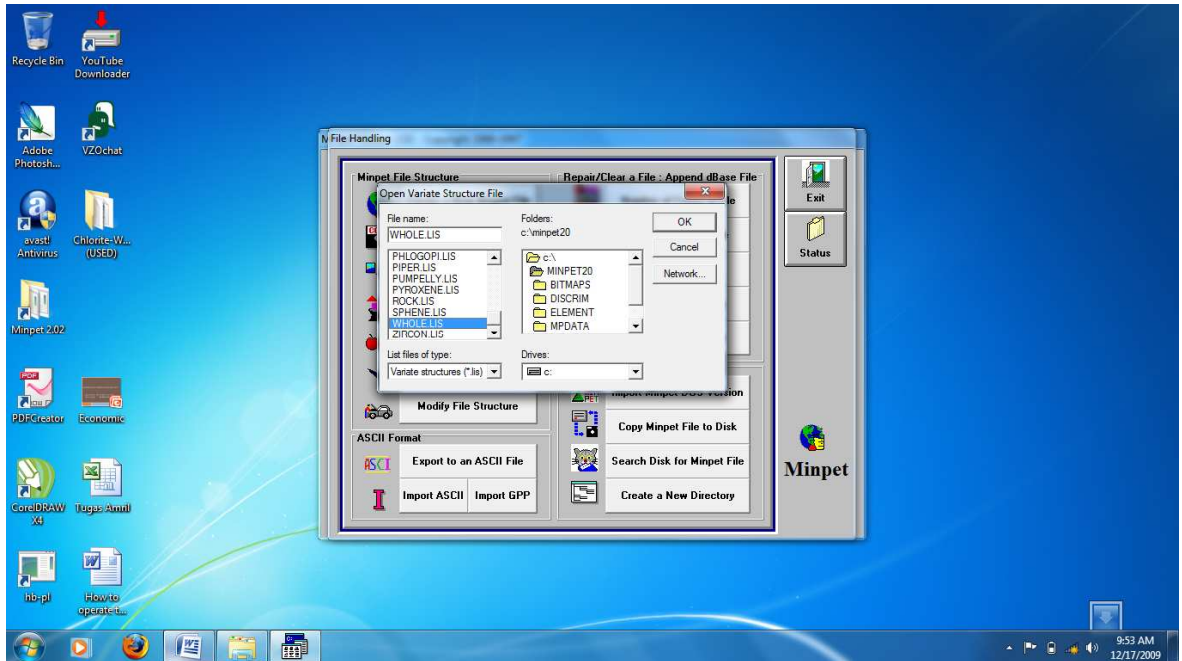
## HOW TO INPUT THE DATA INTO MINPET SOFTWARE

1. Open Minpet software and then click **Handling**.

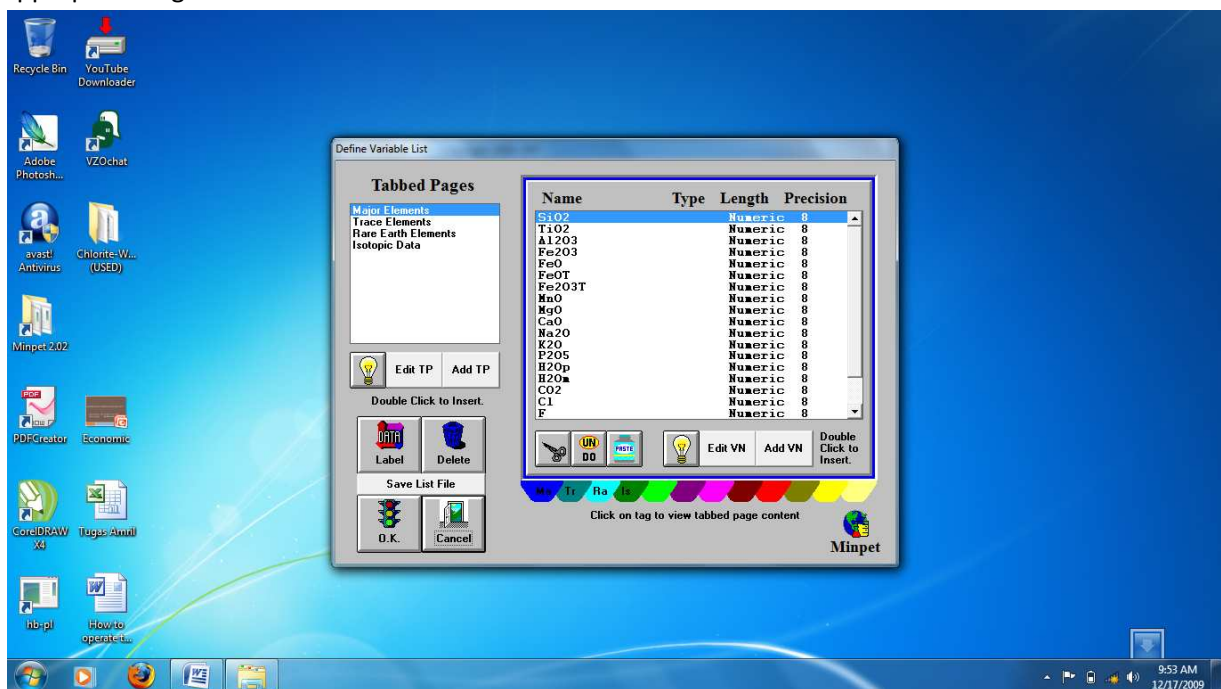


2. Click "Create a new Minpet File"



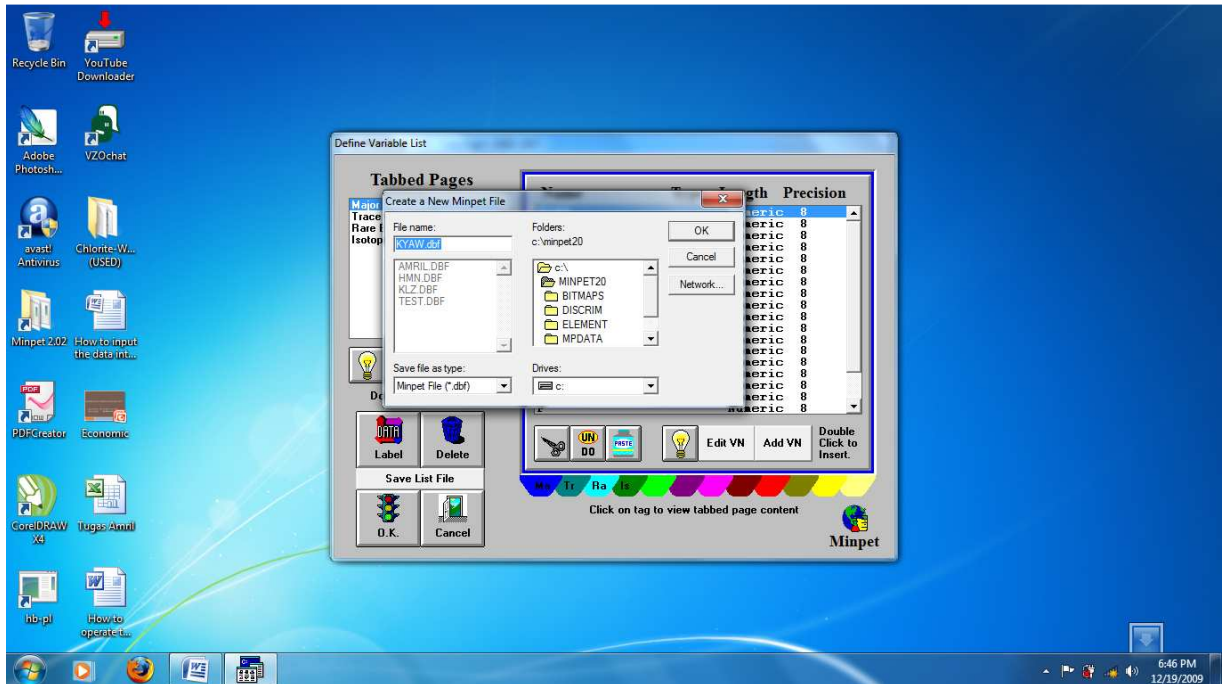
3. Choose the **WHOLE.LIS** and then click ok

Note: Data must be put in the Major Elements and if data are rare elements and choose appropriate region.



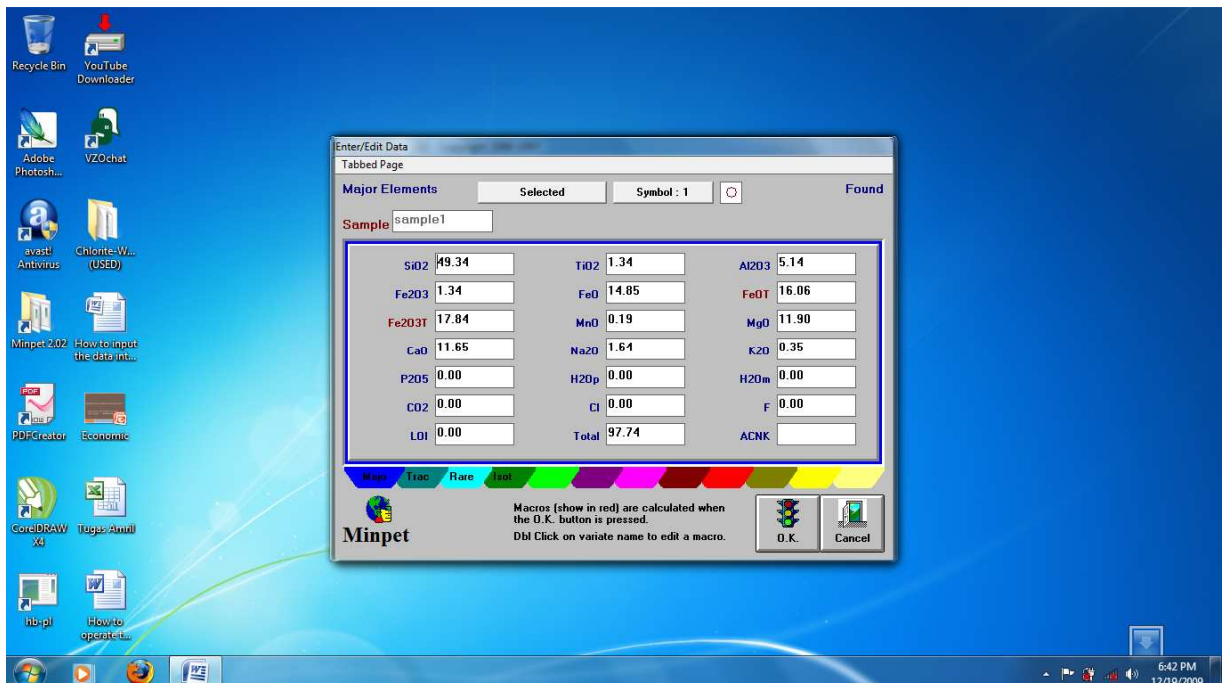
Click **OK**.

Give file name. Eg. KYAW.dbf. And click OK. And click **Exit**



And then, the next step is input your data into the minpet program.

First click **Enter/ Edit** and typing sample no. Eg. Sample1. Click **OK** and insert oxide data



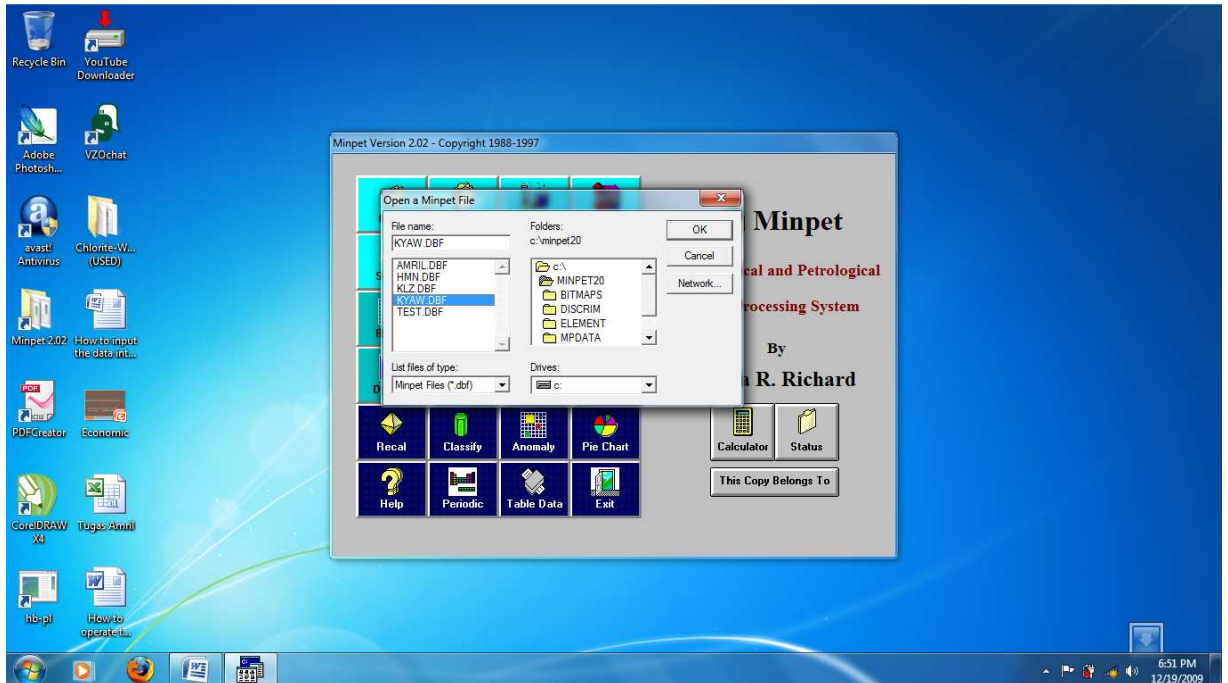
Click **OK**. Note: If the data have many, can input data again.

If finished data inputting, click **Exit**.



## OPERATING MINPET APPLICATION

First click **Open** and choose file name. Eg. KYAW.dbf. And **Ok**.



After finish data inserting, can run desire application.

For example- classification: choose **discrim** and choose your data appropriate classification.

